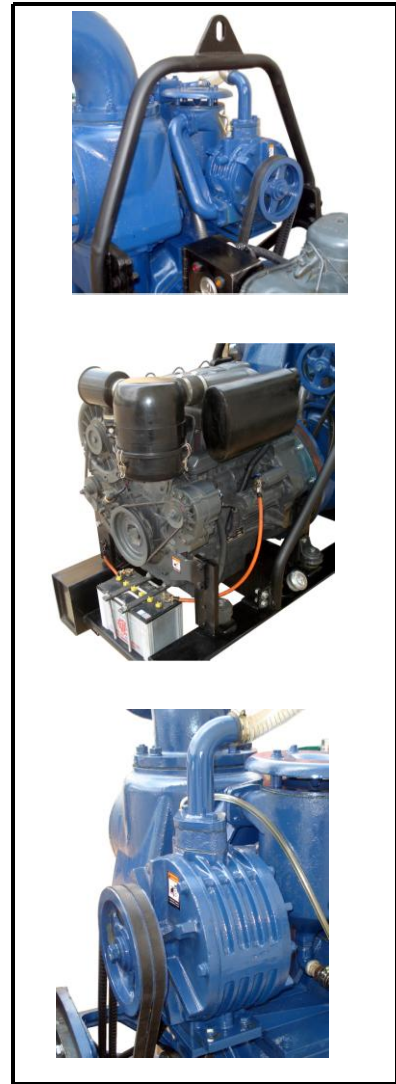


SLUDGE PUMP



TSLP-150

TOKU TSLP-150 6" Sludge Pump specially designed to handle clean or dirty water containing limited solids, and mostly use extensively on construction sites for dewatering.

TSLP-150 is automatic priming and re-priming, is by flood lubricating rotary sliding vane vacuum pump.

- High capacity water pump, used for WellPoint dewatering and sump pumping.
- Hard wearing cast iron parts.
- Automatic priming.
- High airflows vacuum system specially designed for dewatering works.
- Hours of unattended operation or intermittent flow.
- Large fuel tank capacity of 140 liters for continuous operation.
- Lifting Hook.
- Key start Engine.
- Available option four wheel site trailer.

MODEL	TSLP-150
Type	Self-priming Centrifugal
Suction x Delivery Diameter (inch)	6" x 6"
Total Head (m)	33
Max. Flow (liter/second)	87
Axle Seal Material	Mechanical Seal (Ceramic-carbon)
Suction m(ft)	8 (26)
Engine	BEINEI F3L912
Engine Type :	Air-cooled Diesel
Max. Output (hp/rpm)	32HP / 1500RPM
Starting System	Electric Start
Total Weight (kg)	960
Dimension (L x W x H) (mm)	2000 x 1200 x 1650